

KETCHIKAN GATEWAY BOROUGH SCHOOL DISTRICT
AGENDA STATEMENT

No. 9 c.

MEETING OF August 24, 2022

Item Title:

CONSENT CALENDAR:
Motion to approve a contract with Siemens
for camera and security upgrades at Schoenbar Middle
School Facility.


REVIEWED BY:
 Superintendent
 Finance
 Maintenance

SUBMITTED BY Michael Robbins, Superintendent

CONTACT:

Al Jacobson 907 225 2146
Name Phone

APPROVED FOR SUBMITTAL



Superintendent

CONSENT CALENDAR

Matters listed under the "Consent Calendar" are routine and will be enacted by one motion and one vote. The appropriate motion is to: "I move to approve the Consent Calendar." There will be no separate discussion of the items under the Consent Calendar. If a Board member requests discussion, that item will be removed from the Consent Calendar and will be considered under "Unfinished Business."

SUMMARY STATEMENT:

The School Board is being asked to approve a contract with Siemens for camera and security upgrades at Schoenbar Middle School Facility.

ISSUE: Board Policy governs the district's purchasing and contracting procedures. Board Policy requires Board approval for expenditures and financial obligations over \$25, 000.

BACKGROUND:

This is for 2022-23 Borough funded Schoenbar security upgrades. These upgrades were recommended under the 2020/21 Security Risk Management Consultants (SRMC) security audit of the District's buildings. The areas within the proposal are modeled to give maximum camera coverages of the campus.

Siemens is a sole source provider under Sourcewell contract # 031517-SIE, hence can forego competitive bidding process.

ATTACHMENTS:

- Siemens Contract Agreement
- Siemens Sourcewell Contract #031517-SIE

RECOMMENDATION:

Approval of the contract with Siemens for camera and security upgrades at Schoenbar Middle School Facility.

FISCAL NOTE*

[] N/A EXPENDITURE
REQUIRED \$ 60,841.00

RECOMMENDED ACTION *(Only if not approved as part of the Consent Calendar):*

"I move that the Board of Education approve a contract with Siemens for camera and security upgrades at the Schoenbar Middle School Facility in the amount of \$60,841.00"

SIEMENS

PROPOSAL

KGBSD Schoenbar VMS

PREPARED BY

Siemens Industry, Inc.

Siemens Sourcewell Contract # 030421-SIE

PREPARED FOR

Ketchikan Gateway Borough School District

Sourcewell Member # 160756

DELIVERED ON

April 13, 2022

SMART BUILDINGS

Transforming the Everyday



Table of Contents

| | |
|-------------------------------------|----|
| SIEMENS PROPOSAL | 3 |
| Contact Information | 3 |
| Scope of Work | 4 |
| Combined Camera Layouts | 5 |
| Camera Model by Name/Location | 16 |
| Bill of Material | 17 |
| Inclusions | 18 |
| Exclusions | 18 |
| Total Investment..... | 18 |
| Payment Terms..... | 19 |
| Terms and Conditions..... | 20 |
| Terms & Conditions Link(s) | 20 |
| Signature Page | 21 |
| Signature Page | 21 |

Contact Information

Proposal #: 6853227
Date: April 13, 2022

Sales Executive: Jeff Bouton
Branch Address: 5333 Fairbanks Street
Suite B, Anchorage 99518
Telephone: (907) 903-6208
Email Address: jeffrey.bouton@siemens.com

Customer Contact: Al Jacobson - Director of Facilities
Customer: Ketchikan Gateway Borough School District
Address: 333 SCHOENBAR RD
KETCHIKAN AK 99901-6278

Services shall be provided at: Schoenbar Middle School
Ketchikan, Alaska

Scope of Work

As a long standing partner to Ketchikan School District, Siemens is pleased to offer this proposal to improve the physical security system coverage at Schoenbar Middle School with modern camera hardware. The camera hardware included in the proposal will be utilized to replace existing legacy analog cameras and expand coverage to areas not currently monitored.

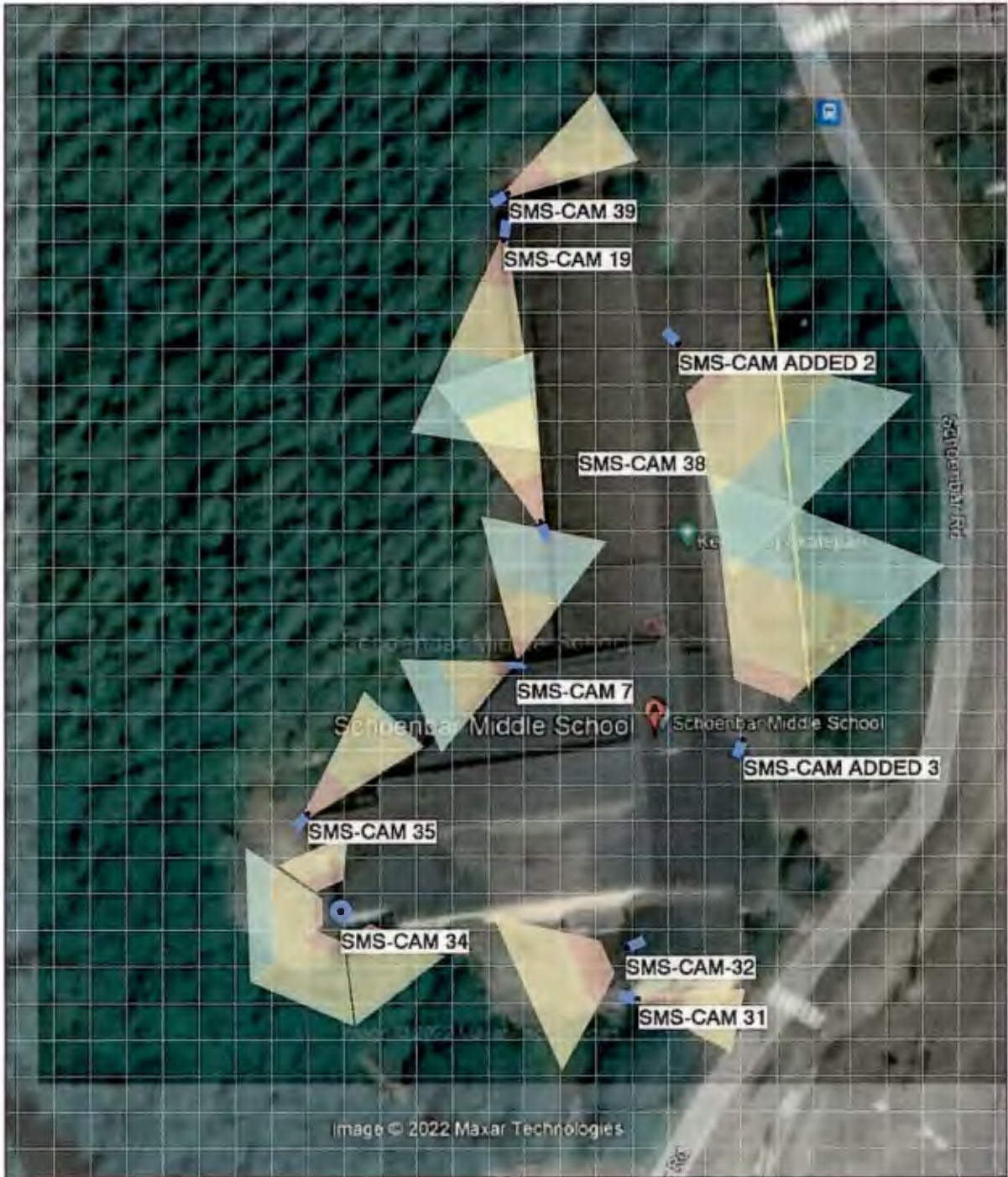
Siemens proposed camera and layout is based on a site visit conducted on April 7th, 2022 and drawings furnished to Siemens by Ketchikan School District leadership, showing existing and desired camera locations. Siemens jointly developed the standard camera manufacturer and resolution requirements through discussions with leadership, and modeled the different camera models in each of the chosen locations with an industry standard software application. That modeling is included in this proposal.

Siemens shall furnish additional Milestone XProtect Professional+ Device Channel Licenses and CarePlus credits to maintain the periodicity of the CarePlus covering the existing licensed channels. Siemens to furnish thirty eight (38) additional licenses to coincide with the thirty eight (38) cameras included here-in.

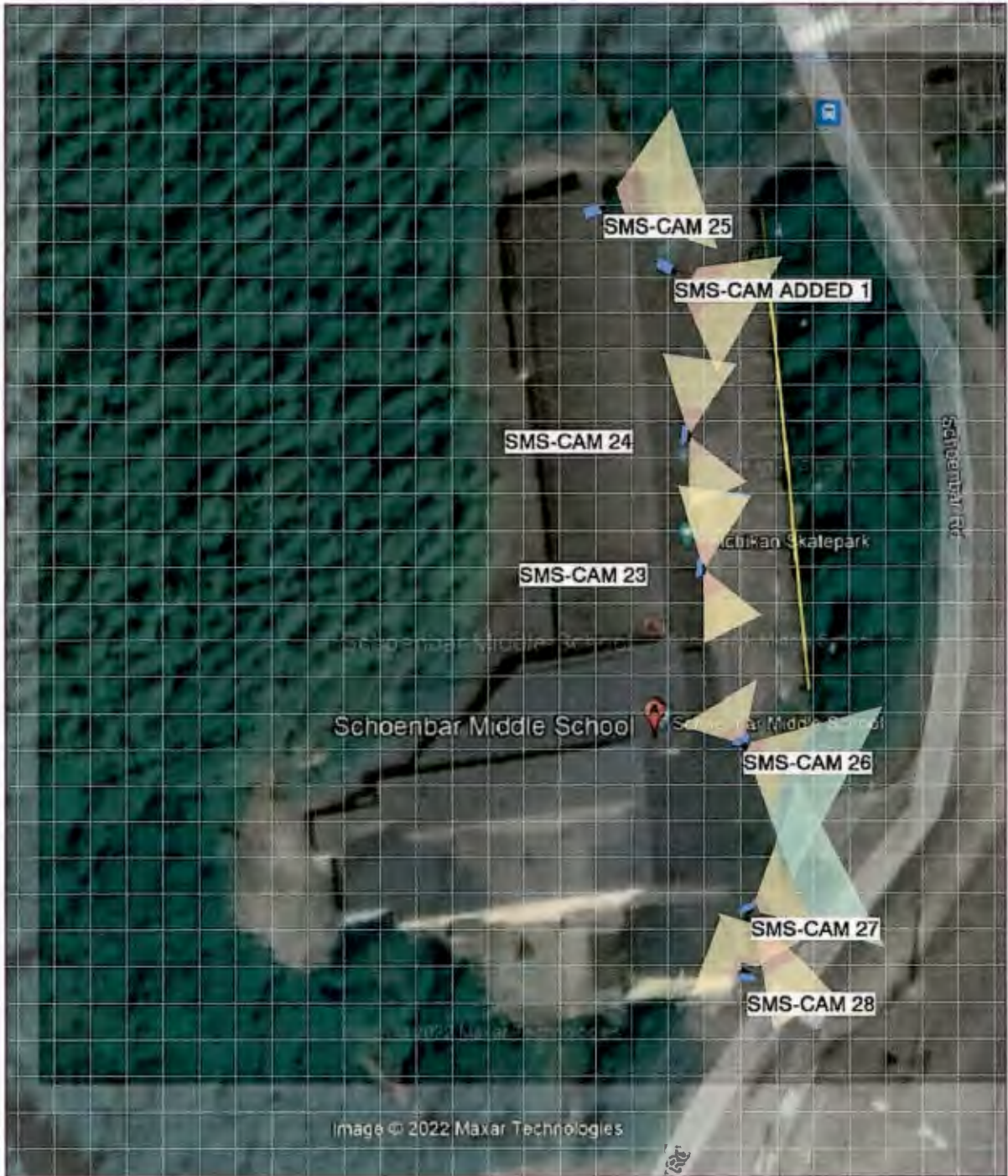
Schoenbar Middle School

Exterior Camera Perimeter

Jeff Bouton - Siemens
4/13/2022
Version



| Camera ID | Manufacturer / Model | Description | Installation Height, ft | Resolution | Focal Length | Sensor Size | Pixels On Target |
|-----------------|---------------------------|------------------------------------|-------------------------|------------|--------------|-------------|------------------|
| SMS-CAM-32 | Bosch NDE-8504-R | Fixed dome 8MP PTRZ H.265 IVA IP66 | 12 | 3840x2160 | 6 | 1/1.8 16:9 | 39 ppf |
| SMS-CAM ADDED 3 | Bosch NDE-8504-R | Fixed dome 8MP PTRZ H.265 IVA IP66 | 20 | 3840x2160 | 8 | 1/1.8 16:9 | 27 ppf |
| SMS-CAM ADDED 2 | Bosch NDE-8504-R | Fixed dome 8MP PTRZ H.265 IVA IP66 | 20 | 3840x2160 | 7 | 1/1.8 16:9 | 26 ppf |
| SMS-CAM 39 | Bosch NDE-8503-R | Fixed dome 6MP PTRZ H.265 IVA IP66 | 14 | 1840x3264 | 5 | 1/1.8 9:16 | 37 ppf |
| SMS-CAM 19 | Bosch NDE-8503-R | Fixed dome 6MP PTRZ H.265 IVA IP66 | 14 | 1840x3264 | 5 | 1/1.8 9:16 | 24 ppf |
| SMS-CAM 38 | Bosch NDE-8503-R | Fixed dome 6MP PTRZ H.265 IVA IP66 | 14 | 1840x3264 | 5 | 1/1.8 9:16 | 30 ppf |
| SMS-CAM 35 | Bosch NDE-8503-R | Fixed dome 6MP PTRZ H.265 IVA IP66 | 14 | 1840x3264 | 5 | 1/1.8 9:16 | 37 ppf |
| SMS-CAM 34 | Bosch NDM-7703-AL | Fixed dome 20MP 3.7-7.7mm IR IP66 | 16 | 10368x1944 | 5 | 1/2.7 16:3 | 52 ppf |
| SMS-CAM 7 | Hanwha Techwin PNM-9000VD | 5MP Dual Lens Multi-sensor | 12 | 3840x2560 | 3.7 | 1/1.8 3:2 | 28 ppf |
| SMS-CAM 31 | Bosch NDE-8503-R | Fixed dome 6MP PTRZ H.265 IVA IP66 | 14 | 1840x3264 | 5 | 1/1.8 9:16 | 45 ppf |



| Camera ID | Manufacturer / Model | Description | Installation Height, ft | Resolution | Focal Length | Sensor Size | Pixels On Target |
|-----------------|---------------------------|------------------------------------|-------------------------|------------|--------------|-------------|------------------|
| SMS-CAM 23 | Hanwha Techwin PNM-9000VD | 5MP Dual Lens Multi-sensor | 10 | 3840x2560 | 3.7 | 1/1.8 3:2 | 37 ppf |
| SMS-CAM 24 | Hanwha Techwin PNM-9000VD | 5MP Dual Lens Multi-sensor | 10 | 3840x2560 | 3.7 | 1/1.8 3:2 | 37 ppf |
| SMS-CAM ADDED 1 | Bosch NDE-8503-R | Fixed dome 6MP PTRZ H.265 IVA IP66 | 10 | 3264x1840 | 5.98333333 | 1/1.8 16:9 | 41 ppf |
| SMS-CAM 26 | Hanwha Techwin PNM-9000VD | 5MP Dual Lens Multi-sensor | 10 | 5120x1920 | 3.7 | 1/1.8 5:2 | 21 ppf |
| SMS-CAM 25 | Bosch NDE-8503-R | Fixed dome 6MP PTRZ H.265 IVA IP66 | 10 | 3264x1840 | 5.98333333 | 1/1.8 16:9 | 37 ppf |
| SMS-CAM 28 | Hanwha Techwin PNM-9000VD | 5MP Dual Lens Multi-sensor | 14 | 5120x1920 | 3.7 | 1/1.8 5:2 | 40 ppf |
| SMS-CAM 27 | Hanwha Techwin PNM-9000VD | 5MP Dual Lens Multi-sensor | 12 | 5120x2560 | 3.7 | 1/1.8 2:1 | 21 ppf |

Schoenbar Middle School

1st Floor Interior

Jeff Bouton - Siemens
4/13/2022
Version

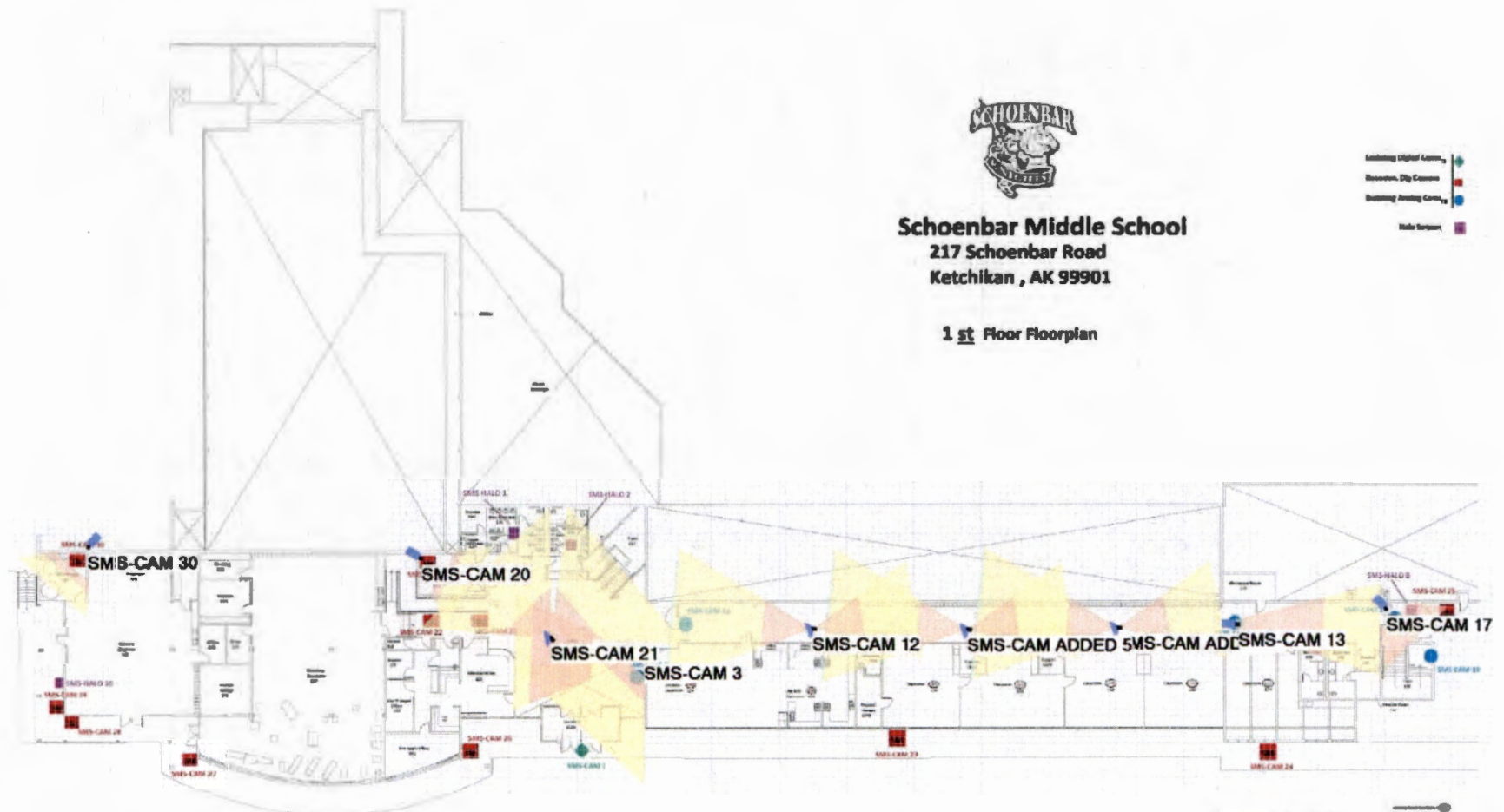
Site Plan. Schoenbar Middle School



Schoenbar Middle School
217 Schoenbar Road
Ketchikan, AK 99901

1st Floor Floorplan

- Archiving Digital Camera
- Recess/Dig Camera
- Building Aiming Camera
- Main Entrance



| Camera ID | Manufacturer / Model | Description | Installation Height, ft | Resolution | Focal Length | Sensor Size | Pixels On Target |
|-----------------|---------------------------|---|-------------------------|------------|--------------|-------------|------------------|
| SMS-CAM 30 | Bosch NDI-4502-AL | Professional IP dome camera for indoor HD surveillance with H.265, Essential Video Analytics and integrated Infrared. Fixed dome 2MP 3-10mm auto. | 10 | 1920x1080 | 4 | 1/2.9 16:9 | 56 ppf |
| SMS-CAM 20 | Bosch NDI-4502-AL | Professional IP dome camera for indoor HD surveillance with H.265, Essential Video Analytics and integrated Infrared. Fixed dome 2MP 3-10mm auto. | 10 | 1920x1080 | 4 | 1/2.9 16:9 | 55 ppf |
| SMS-CAM 21 | Hanwha Techwin PNM-9000VD | 5MP Dual Lens Multi-sensor | 10 | 5120x1920 | 3.7 | 1/1.8 5:2 | 39 ppf |
| SMS-CAM 3 | Hanwha Techwin PNM-9000VD | 5MP Dual Lens Multi-sensor | 12 | 5120x1920 | 7 | 1/1.8 5:2 | 67 ppf |
| SMS-CAM ADDED 4 | Hanwha Techwin PNM-9000VD | 5MP Dual Lens Multi-sensor | 10 | 3840x2560 | 3.7 | 1/1.8 3:2 | 48 ppf |
| SMS-CAM 12 | Hanwha Techwin PNM-9000VD | 5MP Dual Lens Multi-sensor | 10 | 3840x2560 | 3.7 | 1/1.8 3:2 | 48 ppf |
| SMS-CAM ADDED 5 | Hanwha Techwin PNM-9000VD | 5MP Dual Lens Multi-sensor | 10 | 3840x2560 | 3.7 | 1/1.8 3:2 | 48 ppf |
| SMS-CAM 17 | Bosch NDI-5503-AL | Professional IP dome camera for indoor MP surveillance with H.265 and Essential Video Analytics. Fixed dome 5MP AVF H.265 | 10 | 3072x1728 | 3 | 1/2.9 16:9 | 83 ppf |
| SMS-CAM 13 | Bosch NDI-5503-AL | Professional IP dome camera for indoor MP surveillance with H.265 and Essential Video Analytics. Fixed dome 5MP AVF H.265 | 10 | 1728x3072 | 3 | 1/2.9 9:16 | 53 ppf |

Schoenbar Middle School

2nd Floor Interior

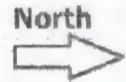
Jeff Bouton - Siemens
4/13/2022
Version

Site Plan. Schoenbar Middle School

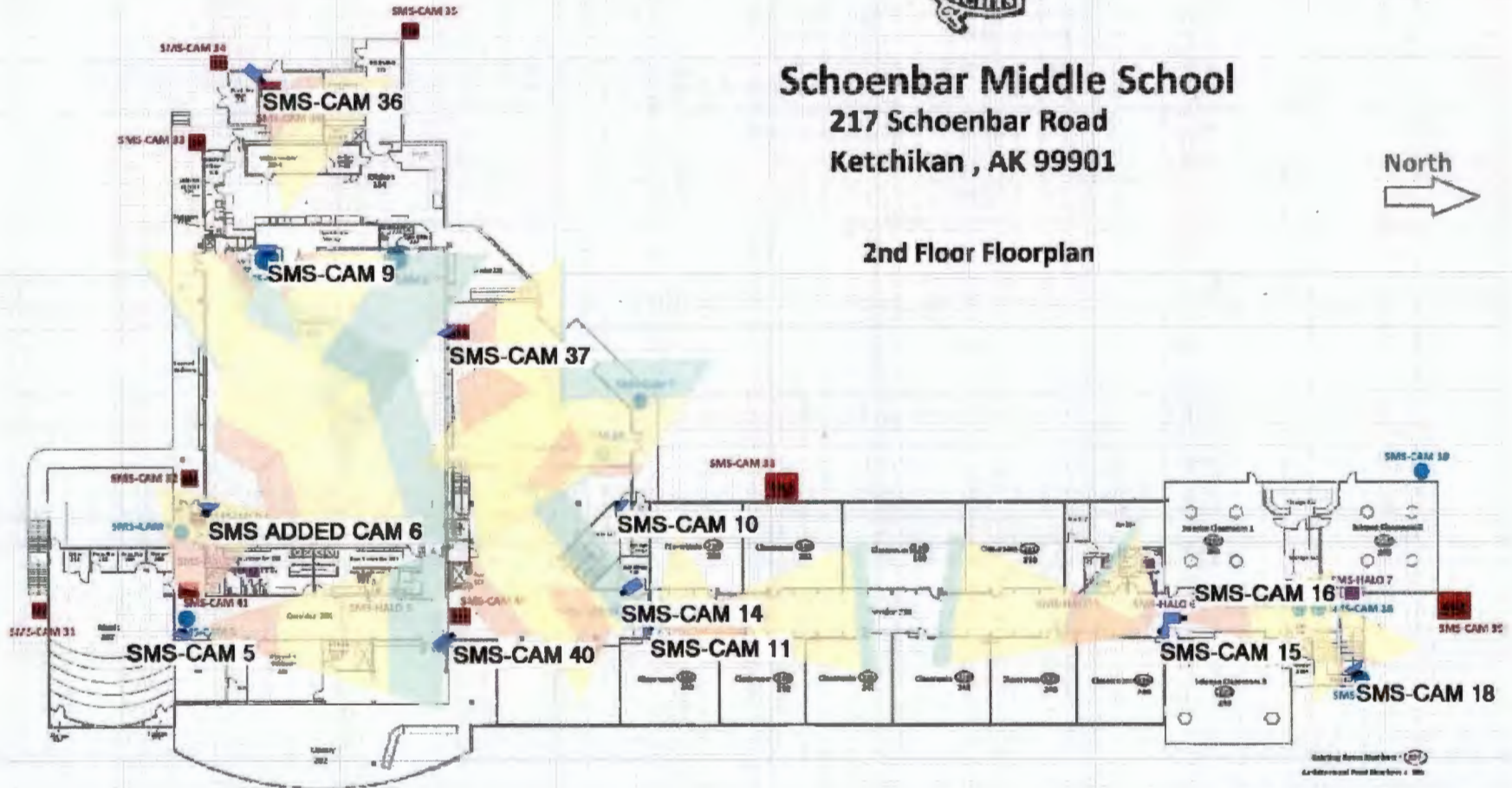


Schoenbar Middle School
217 Schoenbar Road
Ketchikan, AK 99901

- Existing Digital Camera 
- Recomm. Dig Camera 
- Existing Analog Camera 
- HALO SENSORS 



2nd Floor Floorplan



| Camera ID | Manufacturer / Model | Description | Installation Height, ft | Resolution | Focal Length | Sensor Size | Pixels On Target |
|-----------------|---------------------------|---|-------------------------|------------|------------------|-------------|------------------|
| SMS-CAM 5 | Hanwha Techwin PNM-9000VD | 5MP Dual Lens Multi-sensor | 12 | 5120x2560 | 7 | 1/1.8 2:1 | 52 ppf |
| SMS-CAM 10 | Hanwha Techwin PNM-9000VD | 5MP Dual Lens Multi-sensor | 16 | 5120x1920 | 7 | 1/1.8 5:2 | 39 ppf |
| SMS-CAM 37 | Hanwha Techwin PNM-9000VD | 5MP Dual Lens Multi-sensor | 12 | 5120x1920 | 7 | 1/1.8 5:2 | 37 ppf |
| SMS-CAM 40 | Bosch NDI-5503-AL | Professional IP dome camera for indoor MP surveillance with H.265 and Essential Video Analytics. Fixed dome 5MP AVF H.265 | 12 | 3072x1728 | 4.13333333333333 | 1/2.9 16:9 | 31 ppf |
| SMS-CAM 14 | Bosch NDI-5503-AL | Professional IP dome camera for indoor MP surveillance with H.265 and Essential Video Analytics. Fixed dome 5MP AVF H.265 | 12 | 3072x1728 | 4.13333333333333 | 1/2.9 16:9 | 56 ppf |
| SMS-CAM 36 | Bosch NDI-5503-AL | Professional IP dome camera for indoor MP surveillance with H.265 and Essential Video Analytics. Fixed dome 5MP AVF H.265 | 12 | 3072x1728 | 3.5 | 1/2.9 16:9 | 42 ppf |
| SMS-CAM 16 | Bosch NDI-5503-AL | Professional IP dome camera for indoor MP surveillance with H.265 and Essential Video Analytics. Fixed dome 5MP AVF H.265 | 10 | 1728x3072 | 3 | 1/2.9 8:16 | 42 ppf |
| SMS-CAM 18 | Hanwha Techwin PNM-9000VD | 5MP Dual Lens Multi-sensor | 16 | 5120x1920 | 3.7 | 1/1.8 5:2 | 51 ppf |
| SMS-CAM 15 | Hanwha Techwin PNM-9000VD | 5MP Dual Lens Multi-sensor | 12 | 5120x2560 | 7 | 1/1.8 2:1 | 35 ppf |
| SMS-CAM 11 | Hanwha Techwin PNM-9000VD | 5MP Dual Lens Multi-sensor | 12 | 5120x2560 | 3.7 | 1/1.8 2:1 | 40 ppf |
| SMS-CAM 9 | Hanwha Techwin PNM-9000VD | 5MP Dual Lens Multi-sensor | 16 | 5120x1920 | 4.8 | 1/1.8 5:2 | 23 ppf |
| SMS ADDED CAM 6 | Hanwha Techwin PNM-9000VD | 5MP Dual Lens Multi-sensor | 16 | 5120x1920 | 7 | 1/1.8 5:2 | 31 ppf |

Camera Model By Name/Location

| MODEL SHEET | CAM Number | Camera Location | Cam Type | Mount | Camera Model | Type |
|--------------------|-----------------|--|----------|---------|--------------|---------------|
| Interior 1st Level | SMS-CAM 3 | 1st floor Office\Commons\Lobby Looking South | Indoor | Wall | PNM-9000VD | 5MPx2 |
| Interior 2nd Level | SMS-CAM 5 | Library Hallway | Indoor | Wall | PNM-9000VD | 5MPx2 |
| Exterior Perimeter | SMS-CAM 7 | Outside Commons (PTZ) | Outdoor | Corner | PNM-9000VD | 5MPx2 |
| Interior 2nd Level | SMS-CAM 9 | Gym Entrance Right | Indoor | Wall | PNM-9000VD | 5MPx2 |
| Interior 2nd Level | SMS-CAM 10 | Commons\Lunch PTZ | Indoor | Corner | PNM-9000VD | 5MPx2 |
| Interior 2nd Level | SMS-CAM 11 | 2nd floor Hallway PTZ Looking North | Indoor | Wall | PNM-9000VD | 5MPx2 |
| Interior 1st Level | SMS-CAM 12 | 1st floor Hallway Looking South | Indoor | Ceiling | PNM-9000VD | 5MPx2 |
| Interior 1st Level | SMS-CAM 13 | 1st floor Hallway looking North | Indoor | Ceiling | NDI-5503-AL | 5MP |
| Interior 2nd Level | SMS-CAM 14 | Commons Hallway Looking South | Indoor | Wall | NDI-5503-AL | 5MP |
| Interior 2nd Level | SMS-CAM 15 | 2nd floor Hallway looking South | Indoor | Wall | PNM-9000VD | 5MPx2 |
| Interior 2nd Level | SMS-CAM 16 | 2nd floor Hallway looking North | Indoor | Ceiling | NDI-5503-AL | 5MP |
| Interior 1st Level | SMS-CAM 17 | 1st floor North Entry | Indoor | Ceiling | NDI-5503-AL | 5MP |
| Interior 2nd Level | SMS-CAM 18 | North Stairwell | Indoor | Ceiling | PNM-9000VD | 5MPx2 |
| Exterior Perimeter | SMS-CAM 19 | Outside North Rear Corner PTZ | Outdoor | Wall | NDE-8503-R | 6MP Starlight |
| Interior 1st Level | SMS-CAM 20 | Inside Electrical Room 121 | Indoor | Wall | NDI-4502-AL | 1080P |
| Interior 1st Level | SMS-CAM 21 | 1st floor Office\Commons\Lobby Looking North | Indoor | Ceiling | PNM-9000VD | 5MPx2 |
| Exterior Front | SMS-CAM 23 | Outside Parking Lot | Outdoor | Soffit | PNM-9000VD | 5MPx2 |
| Exterior Front | SMS-CAM 24 | Outside Parking Lot | Outdoor | Soffit | PNM-9000VD | 5MPx2 |
| Exterior Front | SMS-CAM 25 | Outside North Entry | Outdoor | Wall | NDE-8503-R | 6MP Starlight |
| Exterior Front | SMS-CAM 26 | Outside Main Entry | Outdoor | Soffit | PNM-9000VD | 5MPx2 |
| Exterior Front | SMS-CAM 27 | Outside Rear Entry Woodshop | Outdoor | Soffit | PNM-9000VD | 5MPx2 |
| Exterior Front | SMS-CAM 28 | Outside Artroom | Outdoor | Soffit | PNM-9000VD | 5MPx2 |
| Interior 1st Level | SMS-CAM 30 | Water\ Main Sprinler Riser Room | Indoor | Wall | NDI-4502-AL | 1080P |
| Exterior Perimeter | SMS-CAM 31 | Outside South Stairs | Outdoor | Wall | NDE-8503-R | 6MP Starlight |
| Exterior Perimeter | SMS-CAM 32 | Outside Rear Gym Doors | Outdoor | Wall | NDE-8504-R | 8MP Starlight |
| Exterior Perimeter | SMS-CAM 34 | Outside MDP | Outdoor | Corner | NDM-7703-AL | 5MPx4 |
| Exterior Perimeter | SMS-CAM 35 | Outside Kitchen Dry Storage | Outdoor | Wall | NDE-8503-R | 6MP Starlight |
| Interior 2nd Level | SMS-CAM 36 | Boiler Room | Indoor | Wall | NDI-5503-AL | 5MP |
| Interior 2nd Level | SMS-CAM 37 | Commons\Lunch\MSR | Indoor | Wall | PNM-9000VD | 5MPx2 |
| Exterior Perimeter | SMS-CAM 38 | Outside Rear Mid School | Outdoor | Wall | NDE-8503-R | 6MP Starlight |
| Exterior Perimeter | SMS-CAM 39 | Outside North Front Corner | Outdoor | Wall | NDE-8503-R | 6MP Starlight |
| Interior 2nd Level | SMS-CAM 40 | Commons\MSR Looking North | Indoor | Wall | NDI-5503-AL | 5MP |
| Exterior Front | SMS-CAM ADDED 1 | North End of Main Parking Lot | Outdoor | Soffit | NDE-8503-R | 6MP Starlight |
| Exterior Perimeter | SMS-CAM ADDED 2 | Main Parking Lot | Outdoor | Corner | NDE-8504-R | 8MP Starlight |
| Exterior Perimeter | SMS-CAM ADDED 3 | Main Parking Lot | Outdoor | Corner | NDE-8504-R | 8MP Starlight |
| Interior 1st Level | SMS-CAM ADDED 4 | 1st Floor North Hallway | Indoor | Ceiling | PNM-9000VD | 5MPx2 |
| Interior 1st Level | SMS-CAM ADDED 5 | 1st Floor North Hallway | Indoor | Ceiling | PNM-9000VD | 5MPx2 |
| Interior 2nd Level | SMS-CAM ADDED 6 | Gymnasium SE Corner | Indoor | Wall | PNM-9000VD | 5MPx2 |

7/6/2022 Update: Siemens will provide the new HANWHA PNM-12082RVD 6MPx2 Dual Varifocal Dome with IR at the following locations:
CAM 7, CAM 23, CAM 24, CAM 26, CAM 27, CAM 28.

| Schoenbar Middle School - Security Improvements - Bill of Materials | | | |
|---|--------------|---------------------|---|
| QTY | Manufacturer | Manufacturer Part # | Description |
| 2 | BOSCH | NDI-4502-AL | FLEXIDOME IP 4000I 2MP 3-10MM AVF H.265 ESSENTIAL ANALYTICS |
| 6 | BOSCH | NDI-5503-AL | FLEXIDOME IP 5000I 5MP HDR 3-10MM AVF H.265 ESSENTIAL ANALYTICS |
| 3 | BOSCH | NDE-8504-R | FIXED DOME 8MP HDR 3-9MM PTRZ IP66 |
| 7 | BOSCH | NDE-8503-R | FIXED DOME 6MP HDR 3-9MM PTRZ IP66 |
| 1 | BOSCH | NDM-7703-AL | FLEXIDOME Multi 7000I 20MP 3.7-7.7MM IP66/IR |
| 15 | BOSCH | NDA-U-WMT | PENDANT WALL MOUNT |
| 12 | BOSCH | NDA-U-PSMB | SURFACE MOUNT BOX WALL OR CEILING |
| 3 | BOSCH | NDA-U-CMT | CORNER MOUNT ADAPTER |
| 9 | BOSCH | NDA-8000-PIPW | PENDANT INTERFACE PLATE, OUTDOOR |
| 1 | BOSCH | NDA-7050-PIPW | PENDANT INTERFACE PLATE, OUTDOOR - MULTI |
| 5 | BOSCH | NDA-5031-PIP | PENDANT INTERFACE PLACE, INDOOR NDI-4/5X SERIES |
| 13 | HANWHA | PNM-9000VD | 5MP Dual Dome |
| 26 | HANWHA | SLA-5M3700D | 5MP 3.7MM Lens Module |
| 3 | HANWHA | SBP-201HMW | Pendant Kit for PNM-9000VD |
| 9 | HANWHA | SBP-300WMW1 | Wall Mount Arm White |
| 2 | HANWHA | SBP-300KMW1 | Corner Mount |
| 38 | MILESTONE | XPPPLUSDL | Milestone XProtect Professional+ Device License |
| 38 | MILESTONE | Y2XPPPLUSDL | Milestone XProtect Professional+ CarePlus - 2 Year |
| 76 | MILESTONE | MXPPPLUSDL | Milestone XProtect Professional+ CarePlus - 1 Month |

7/1/2022 Update: Also included with above
6 each HANWHA PNM-12082RVD - 6MPx2 Varifocal with IR
6 each HANWHA PNM-215HMW - Pendant Kit

Inclusions

1. Standard Freight
2. Project Management to coordinate material procurement and handling to Ketchikan.
3. All exterior cameras to be furnished with pendant caps, wall mounts, and corner mounts.
4. Interior cameras to mount to existing standard electrical rough in boxes. No special mounting hardware is included.

Exclusions

1. Onsite or remote technician labor associated with programming in Milestone. This can be separately proposed if necessary.
2. Additional network switch, workstation, video storage hardware.

Total Investment

Total Investment

\$60,841.00

Siemens Sourcewell Contract # 030421-SIE

Payment Terms

Payment Terms Acceptance Agreement

The total price of: \$60,841.00 and the estimated return on investment are based on the items outlined in this proposal. ANY statements made herein regarding savings that may be achieved by implementing the services offered in this proposal are estimates only. No warranty, either expressed or implied, shall be construed to arise from such statements, nor shall such statements be construed as constituting a guarantee by Siemens that such savings will occur if the services are implemented.

Terms and Conditions Disclaimer

The Customer acknowledges that when approved by the Customer and accepted by Siemens Industry, Inc.: (i) the Proposal and the Contract Terms and Conditions, (together with any other documents incorporated into the forgoing) shall constitute the entire agreement of the parties with respect to its subject matter (collectively, hereinafter referred to as the "Agreement") and (ii) in the event of any conflict between the terms and conditions of the Proposal and the terms and conditions of The Contract Terms and Conditions, the Contract Terms and Conditions shall control.

BY EXECUTION HEREOF, THE SIGNER CERTIFIES THAT (S)HE HAS READ ALL OF THE TERMS AND CONDITIONS AND DOCUMENTS, THAT SIEMENS OR ITS REPRESENTATIVES HAVE MADE NO AGREEMENTS OR REPRESENTATIONS EXCEPT AS SET FORTH THEREIN, AND THAT (S)HE IS DULY AUTHORIZED TO EXECUTE THE SIGNATURE PAGE ON BEHALF OF THE CUSTOMER.

This Proposal is based on the Siemens Industry, Inc. Standard Terms and Conditions and the "Scope of Work" and are to be considered part of this proposal. Proposal is valid for thirty (30) days from the delivery date of April 13, 2022. Payment is due within 30 days of invoice date.

Payment Terms: 25% mobilization in advance, progress payments
Total: \$60,841.00

Terms & Conditions Link(s)

Terms and Conditions (Click to download)

[Terms & Conditions \(Projects\)](#)

(<http://go.siemens.net/15156302>)

[Terms & Conditions \(Products Only\)](#)

(<http://go.siemens.net/15492770>)

Price Escalation. If, during the term of this Contract, the price of various materials or labor or logistics are increased as reflected by CRU/IHS Markit/CMAI/COMEX market index, then Siemens may increase the Contract Sum or apply a surcharge to Customer accordingly.

As a result of the global Covid-19 Virus outbreak, temporary delays in delivery, labor or services from Siemens and its sub-suppliers or subcontractors may occur. Among other factors, Siemens' delivery is subject to the correct and punctual supply from sub-suppliers or subcontractors, and Siemens reserves the right to make partial deliveries or modify its labor or services. While Siemens shall make every commercially reasonable effort to meet the delivery or service or completion date mentioned above, such date is subject to change.

Attachment A

Riders (Click on rider below to download)

[SI Mass Notification Rider](#)

(<http://go.siemens.net/88515649>)

[SI Monitoring Rider](#)

(<http://go.siemens.net/31208927>)

[SI Online Backup and Data Protection](#)

(<http://go.siemens.net/25876317>)

[SI Software License Warranty](#)

(<http://go.siemens.net/59206587>)

[SI Consulting Rider](#)

(<http://go.siemens.net/33041159>)

[SI Shooter Detection System Rider](#)

(<http://go.siemens.net/33327137>)

[SI Thermal Camera Rider](#)

(<http://go.siemens.net/30872411>)

Signature Page

Proposed by:

Siemens Industry, Inc.

Company

Jeff Bouton

Name

6853227

Proposal #

\$60,841.00

Proposal Amount

April 13, 2022

Date

Accepted by:

Ketchikan Gateway Borough School District

Company

Name (Printed)

Signature

Title

Date

Purchase Order #

Siemens Sourcewell Contract #030421-SIE

Ketchikan Gateway Borough School District Sourcewell Member ID #160756

It is understood that funding for this project will be available after July 1, 2022. Siemens will submit our material procurement on behalf of Ketchikan Schools upon receipt of a signed proposal, to ensure existing pricing agreements are honored prior to future expected material cost increases. Siemens will invoice for material after July 1, 2022.



**FACILITY SECURITY & BUILDING
AUTOMATION SYSTEMS
FACILITIES (MRO)**

**NON-MANDATORY FOR STATE AGENCIES
AVAILABLE TO POLITICAL SUBDIVISIONS**

Sourcewell is a State of Minnesota local government agency and service cooperative created under the laws of the State of Minnesota (Minnesota Statutes Section 123A.21) that offers cooperative procurement solutions to its members. Participation is open to all levels of governmental entity, higher education, K-12 education, tribal government, and other public entities located in the United States and Canada.

Alaska is an active member of Sourcewell. To use a contract, a State must sign a Participating Addendum (PA) with the awarded Contractor(s). The State of Alaska has a signed PA with the following awarded company.

Expiration Date: April 22, 2026

| | | |
|--|---|---|
|  <p><small>(Hover and click for Web Link)</small></p> | <p>Siemens Industry, Inc. 1000 Deerfield Parkway Buffalo Grove, IL 60089</p> | <p>Contract #: 031517-SIE PA #: NJPA2018-SECURITY001 IRIS MA #: 22*009</p> |
|--|---|---|

For questions regarding products and pricing:

Contact: Toni Stoddard Phone: 703-689-1472

Email: toni.stoddard@siemensgovt.com

Sourcewell contract 031517-SIE gives access to the following types of goods and services:

| | |
|--|--|
| <ul style="list-style-type: none"> • IP CCTV surveillance systems | <ul style="list-style-type: none"> • Security command & control |
| <ul style="list-style-type: none"> • Access control systems | <ul style="list-style-type: none"> • Physical Security Information |
| <ul style="list-style-type: none"> • Intrusion detection | <ul style="list-style-type: none"> • Management (PSIM) |
| <ul style="list-style-type: none"> • Fire protection systems | <ul style="list-style-type: none"> • Building automation systems |
| <ul style="list-style-type: none"> • Advanced video analytics | <ul style="list-style-type: none"> • Mass notification |

Purchase Orders: To access the contracted Equipment, Products or Services under this Contract, Member must clearly indicate to Vendor that it intends to access this Contract. Typically, a Member will issue a purchase order directly to Vendor. Purchase Orders must clearly note the Sourcewell contract number.

Pricing for Contract: Pricing for contract #031517-SIE offers Sourcewell participating agencies the following:

1. Access to Smart Infrastructure technology solutions and services ranging from security, life-safety, remote monitoring, building automation, energy management, energy services, technology management services, low voltage services and over a dozen categories of labor including trades, technicians project management, engineers and professional
2. Members receive the benefit of a world class technology partner offering turnkey infrastructure solutions as well as discounts on technology up to as much as 60% off the manufacturers' suggested retail price (MSRP) and labor rates discounted 15% off standard rates

Termination: Members may terminate a purchase order, in whole or in part, immediately upon notice to Vendor in the event of any of the following events:

1. The Member fails to receive funding or appropriation from its governing body at levels sufficient to pay for the goods to be purchased;
2. Federal or State laws or regulations prohibit the purchase or change the Member's requirements; or
3. Vendor commits any material breach of this Contract or the additional terms agreed to between the Vendor and a Member.

Subcontractors: The Contractor may use subcontractors; however, the Contractor will be responsible for any agreements with the subcontractors. The Participating State is not agreeing to and is not responsible for any terms and conditions with a subcontractor. Subcontractor participation will be in accordance with the terms and conditions set forth in the Master Agreement.

David-Bacon Act: Vendor must follow all applicable Davis-Bacon Act provisions when required.

Additional information and contract terms and conditions for this contract can be found at the Sourcewell website:

<https://www.sourcewell-mn.gov/cooperative-purchasing/080819-sii#tab-contract-documents>

For additional information, contact:

Shavonne Jordan, Contracting Officer
Office of Procurement & Property Management
Shavonne.jordan@alaska.gov