

KETCHIKAN GATEWAY BOROUGH SCHOOL DISTRICT BOARD OF EDUCATION
AGENDA STATEMENT

No. 11

MEETING OF September 9, 2020

ITEM TITLE: DISCUSSION

DISCUSSION topics

- a. Government to Government meeting with Ketchikan Indian Community - *This is an opportunity for the Board to discuss the Government to Government consultation with Ketchikan Indian Community which occurred on September 1.*
- b. District organizational chart - *An updated organizational chart for the district is attached, as well as Board Policy 2110 which addresses district organization and the current organizational chart.*

ORGANIZATION CHART/LINES OF RESPONSIBILITY

All schools and departments shall form a single administrative system organized so that appropriate decision-making may take place at various levels in accordance with Board policy and administrative regulations. The Superintendent or designee shall maintain a current district organization chart, approved by the Board, which identifies lines of primary responsibility and the relationships between district positions.

The organization chart should clarify working relationships and functions. It is not intended to indicate all the lines of communication and cooperation which must exist to create successful and effective schools. The Superintendent or designee shall insure that all personnel understand to whom they are responsible and for what functions. Lines of responsibility should in no way prevent staff members at all levels from cooperating to develop the best possible school programs and services.

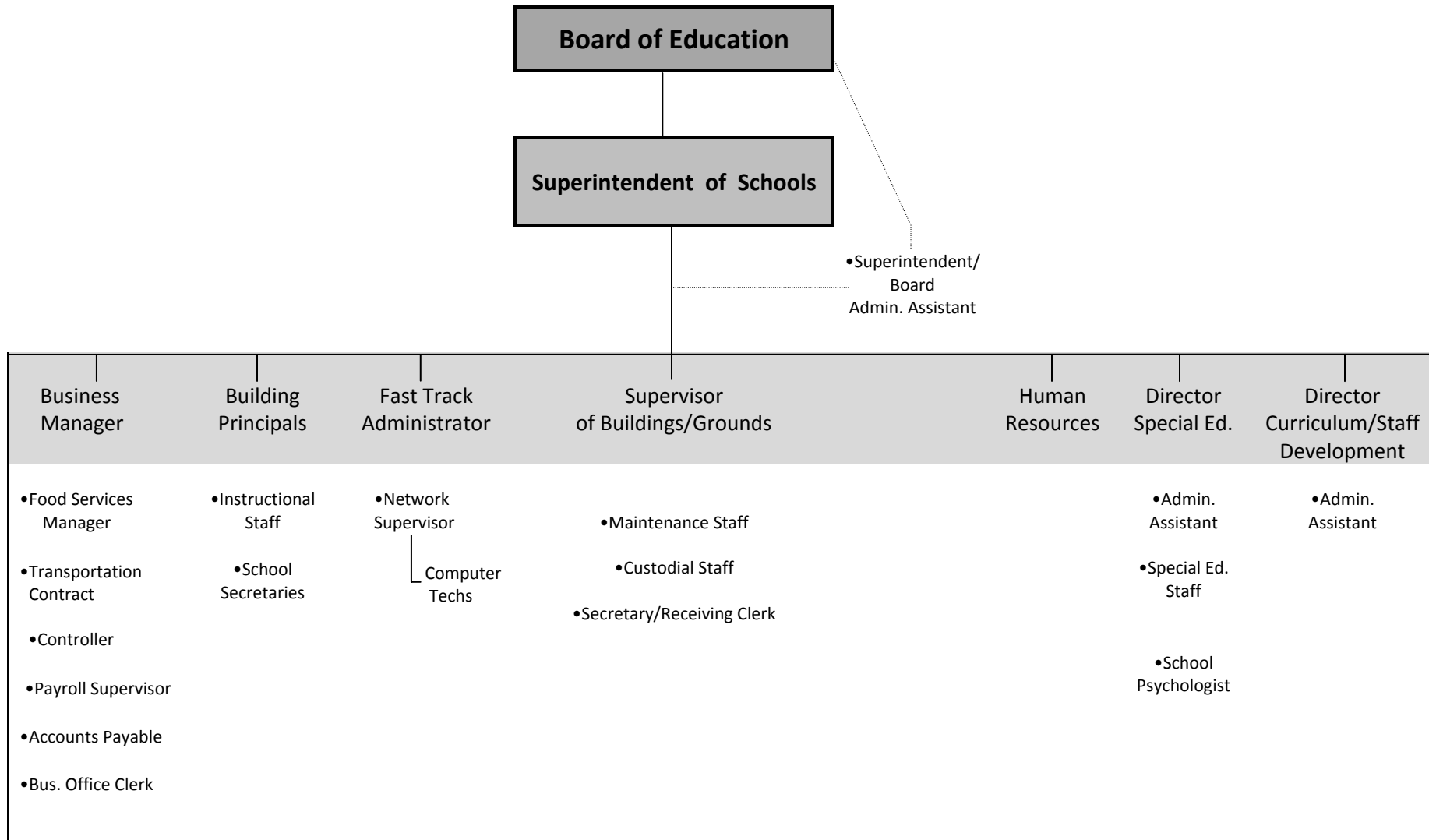
(cf. 2120 - Superintendent of Schools)

(cf. 2210 - Administrative Leeway in Absence of Board Policy)

(cf. 4119.3 - Duties of Personnel)

Ketchikan Gateway Borough School District Organizational Chart

E 2110



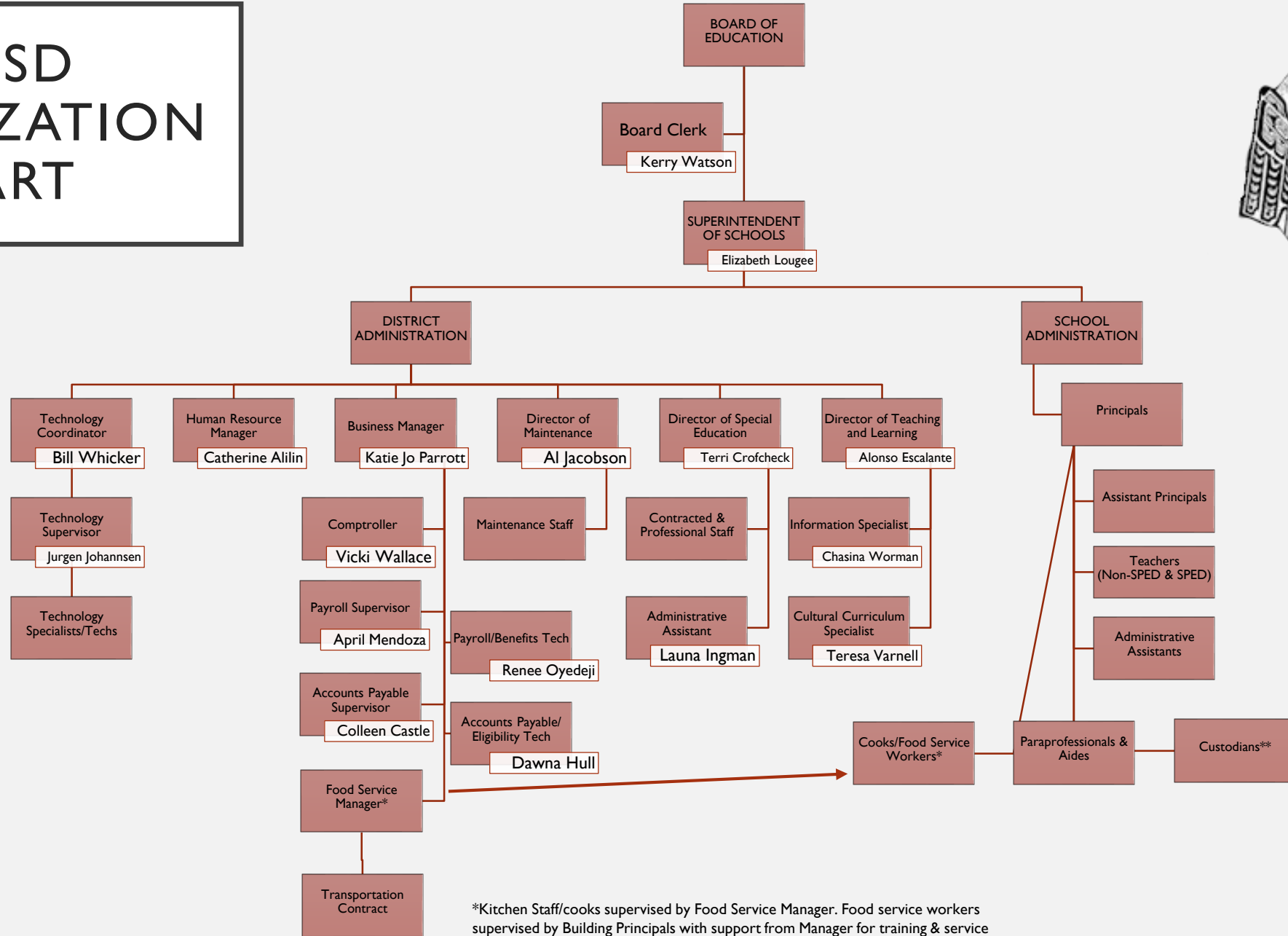
• Superintendent/
Board
Admin. Assistant

• Under the supervision of individual in shaded box

└ Next level of supervision

Revised 2010

KGBSD ORGANIZATION CHART



*Kitchen Staff/cooks supervised by Food Service Manager. Food service workers supervised by Building Principals with support from Manager for training & service
 **Custodians supervised by Building Principals with support from maintenance for training & scheduling

KGBSD ORGANIZATION CHART

